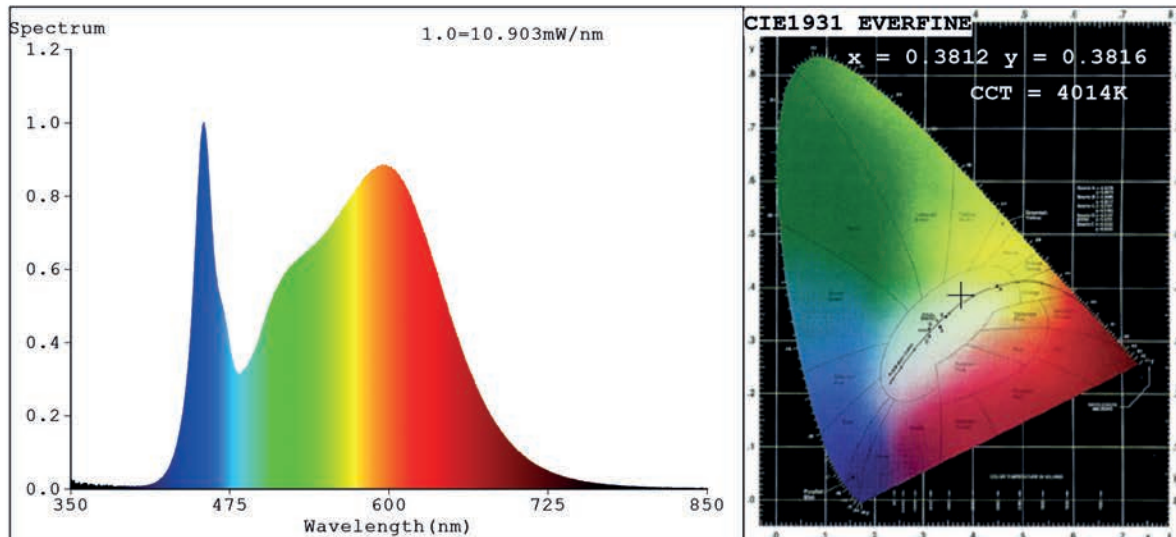


Spectrum Test Report



Color Parameters:

Chromaticity Coordinate: $x=0.3812$ $y=0.3816$ $u'=0.2236$ $v'=0.5038$
 CCT=4014K (Duv=0.0021) Dominant WL:Ld =577.9nm Purity=28.9%
 Ratio:R=18.4% G=77.6% B=4.0%; Peak WL:Lp=454.3nm FWHM=23.7nm
 Render Index:Ra=84.3 CRI=78.2 TM30:Rf=83 Rg=93
 R1 =83 R2 =92 R3 =96 R4 =82 R5 =83 R6 =88 R7 =86
 R8 =65 R9 =12 R10=80 R11=81 R12=62 R13=86 R14=99 R15=76

Photo Parameters:

Flux = 555.6 lm Eff. : 115.16 lm/W Fe = 1.686 W

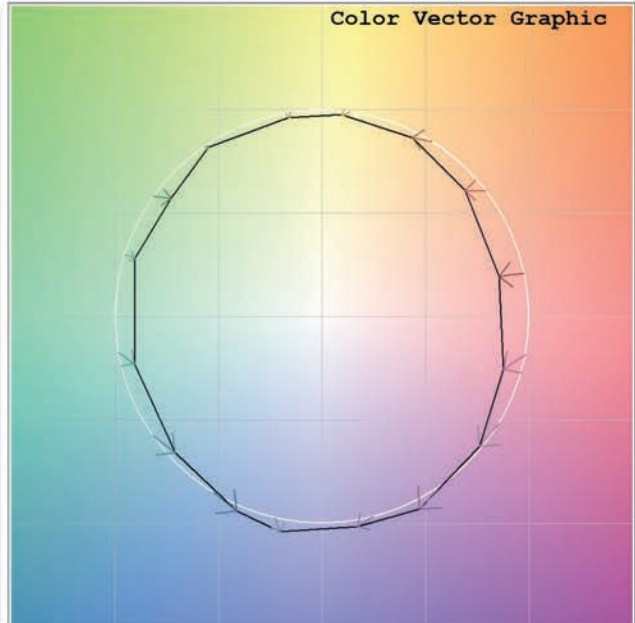
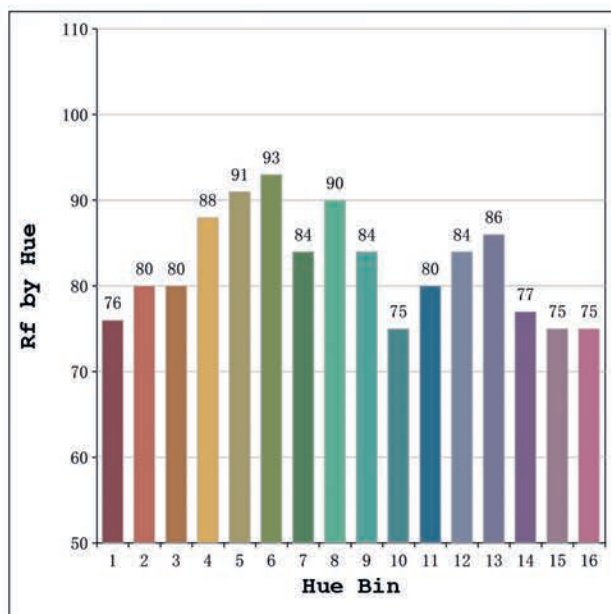
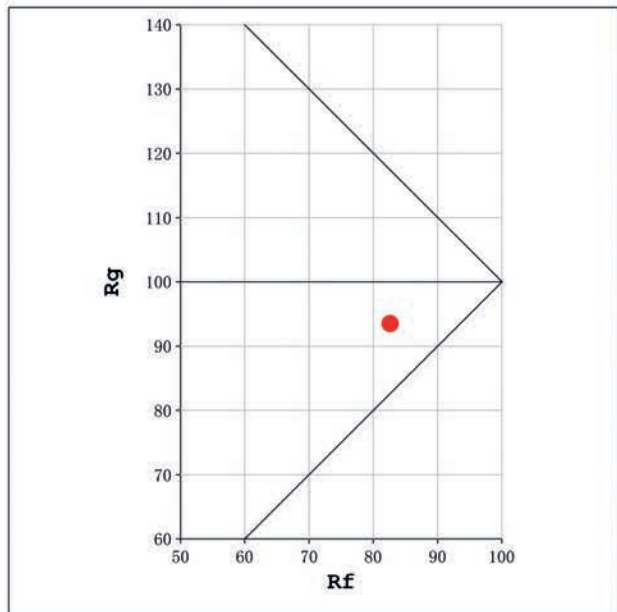
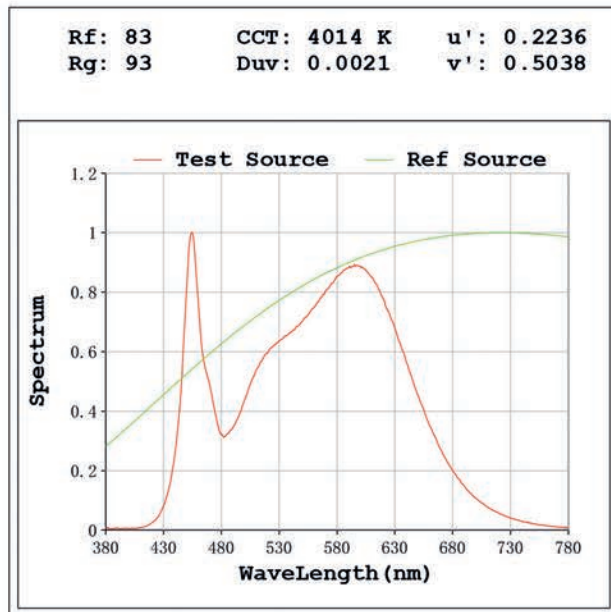
Electrical parameters:

V = 11.998 V I = 0.4021 A P = 4.824 W PF = 1.000

Status: Integral T = 2000 ms Ip = 39238 (60%)

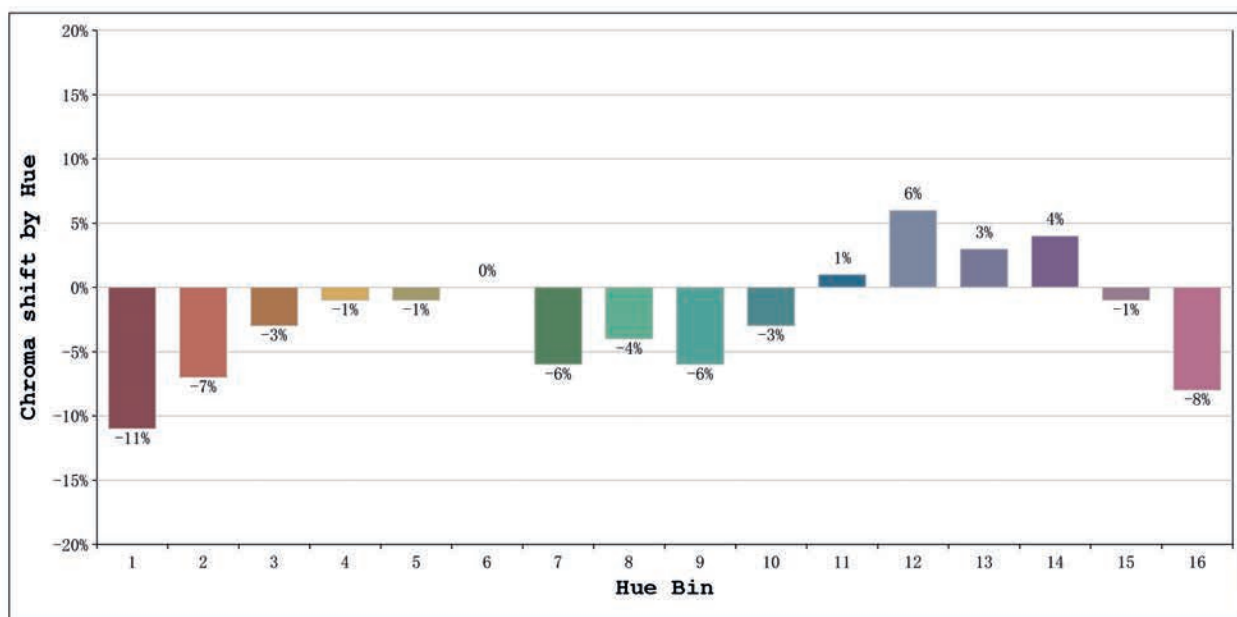
Model:Ecoled Asturias
 Tester:Sergio Carneros
 Temperature:20Deg
 Manufacturer:Luz Negra

Number: 30.113
 Date:2025-06-17 08:45:38
 Humidity:50%
 Remarks:100cm de tira flexible



Model:Ecoled Asturias
 Tester:Sergio Carneros
 Temperature:20Deg
 Manufacturer:Luz Negra

Number: 30.113
 Date:2025-06-17 08:45:38
 Humidity:50%
 Remarks:100cm de tira flexible



			Graphic shift(%)	
Hue Bin	Hue Angle	Rf	Chroma	Hue
1	0.0° - 22.5°	76	-11	1
2	22.5° - 45.0°	80	-7	6
3	45.0° - 67.5°	80	-3	9
4	67.5° - 90.0°	88	-1	4
5	90.0° - 112.5°	91	-1	2
6	112.5° - 135.0°	93	0	-1
7	135.0° - 157.5°	84	-6	-3
8	157.5° - 180.0°	90	-4	1
9	180.0° - 202.5°	84	-6	7
10	202.5° - 225.0°	75	-3	13
11	225.0° - 247.5°	80	1	14
12	247.5° - 270.0°	84	6	4
13	270.0° - 292.5°	86	3	-7
14	292.5° - 315.0°	77	4	-14
15	315.0° - 337.5°	75	-1	-14
16	337.5° - 360.0°	75	-8	-8

Model:Ecoled Asturias
 Tester:Sergio Carneros
 Temperature:20Deg
 Manufacturer:Luz Negra

Number: 30.113
 Date:2025-06-17 08:45:38
 Humidity:50%
 Remarks:100cm de tira flexible